



CAST STONE DATA SHEET 6

FIXING OF SPHERES TO PILLARS USING A STAINLESS STEEL DOWEL

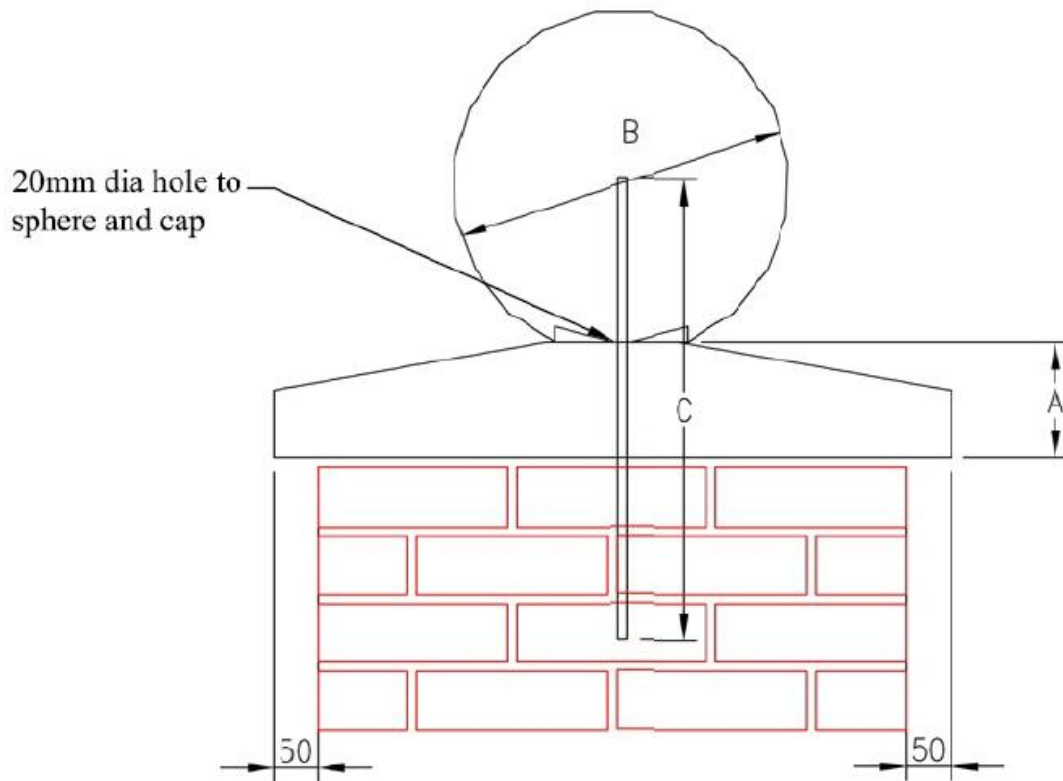


TABLE INDICATING DOWEL ROD SIZES				
PIER CAP	HEIGHT A (mm)	SPHERE	DIM B (mm)	DOWEL LENGTH C (mm) <i>10mm Ø stainless steel</i>
PD1	106	S1	228	340
PD2	111	S1	228	340
PD3	122	S2/S3	305/380	430/505
PD4	125	S2/S3	305/380	430/505
PD5	127	S2/S3	305/380	430/505

Notes:

20mm diameter hole to Sphere and Pier Cap

It is recommended that dowel be fixed in place with Masonry Epoxy Adhesive